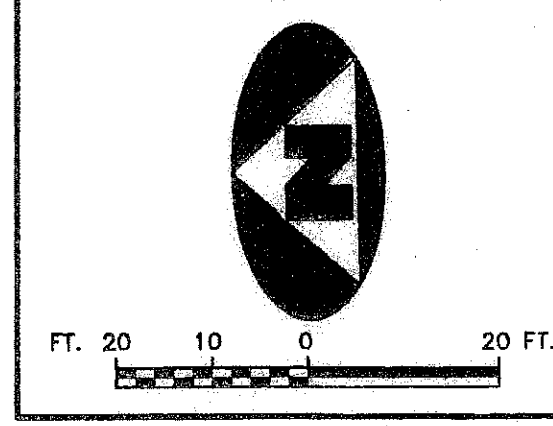
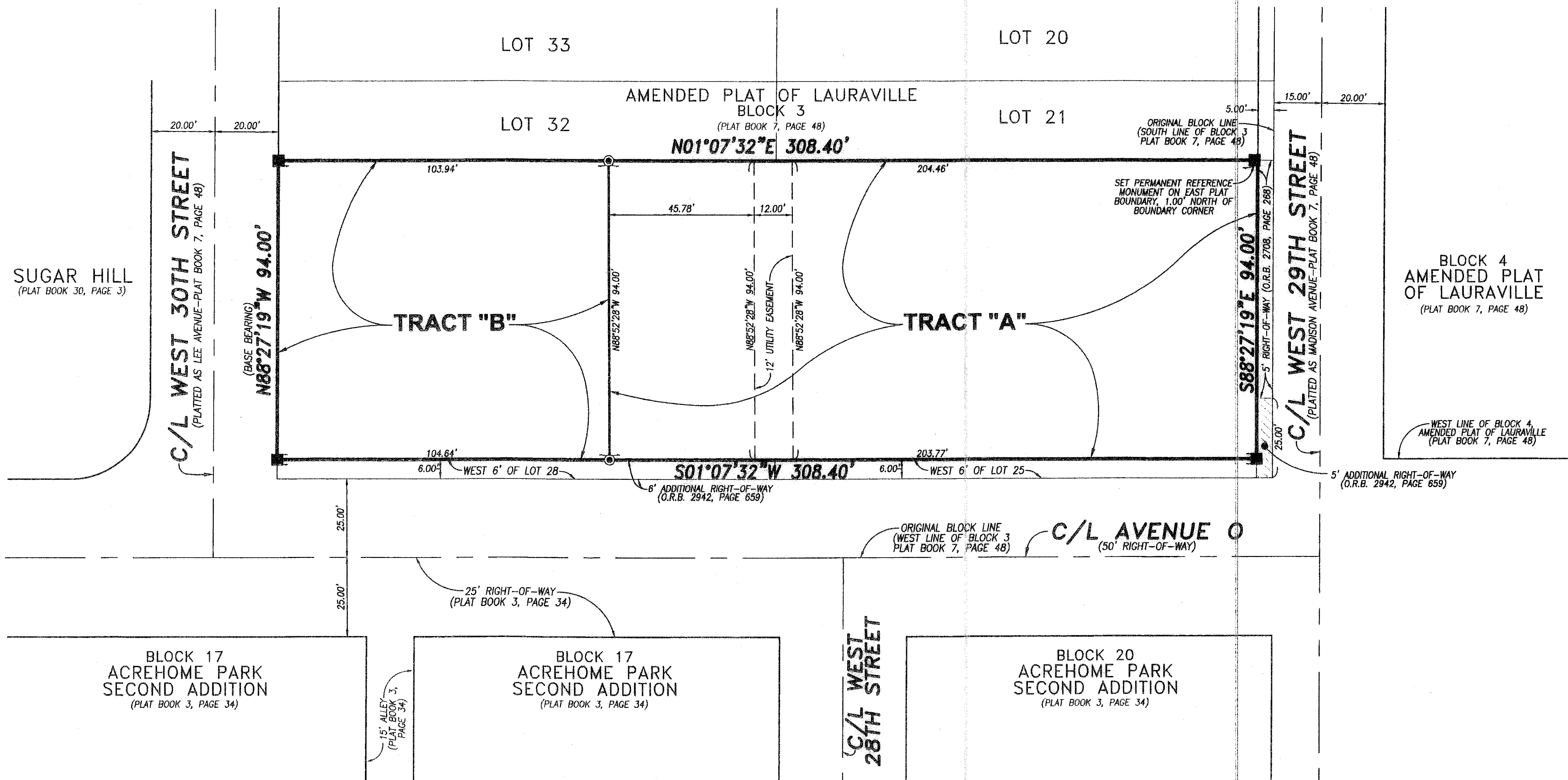


PENTECOSTAL CHURCH OF GOD IN CHRIST

BEING A REPLAT OF LOTS 22 THROUGH 25, INCLUSIVE, AND LOTS 28 THROUGH 31, INCLUSIVE, BLOCK 3, AMENDED PLAT OF LAURAVILLE, RECORDED IN PLAT BOOK 7, PAGE 48, PUBLIC RECORDS, PALM BEACH COUNTY, FLORIDA, AND LYING IN SECTION 29, TOWNSHIP 42 SOUTH, RANGE 43 EAST, CITY OF RIVIERA BACH, FLORIDA.

62



LEGEND

C/L DENOTES A CENTERLINE  
O.R.B. DENOTES OFFICIAL RECORDS BOOK

- DENOTES A SET PERMANENT REFERENCE MONUMENT (LB 7344)
- ⊙ DENOTES A SET 5/8" x 18" IRON REBAR AND CAP (LB 7344)

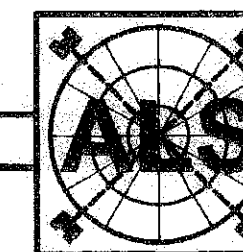
SURVEYOR'S NOTES

- 1) THE BASE BEARING, AS SHOWN HEREON, IS N. 88°27'19" W., ALONG THE NORTH LINE OF LOTS 28 THROUGH 31, AMENDED PLAT OF LAURAVILLE, RECORDED IN PLAT BOOK 7, PAGE 48.
- 2) ALL DISTANCES SHOWN HEREON ARE HORIZONTAL PLANE DISTANCES AND ARE IN U.S. SURVEY FEET AND DECIMAL PARTS THEREOF.
- 3) THIS INSTRUMENT WAS PREPARED BY WM. R. VAN CAMPEN, P.S.M. NO. 2424, IN AND FOR THE OFFICES OF ASSOCIATED LAND SURVEYORS, INC., 4152 WEST BLUE HERON BOULEVARD, SUITE 121, RIVIERA BEACH, FLORIDA, 33404

FILE: 03-0039-PLAT.DWG

WO.NO.: 03-0039  
SCALE: 1"=20'  
DWN: BLS

DATE: 12/5/2005  
SHEET 2 OF 2



ASSOCIATED LAND SURVEYORS, INC.  
4152 W. BLUE HERON BLVD. SUITE 121  
RIVIERA BEACH, FLORIDA 33404  
PHONE: (561)848-2102 L.B. NO. 7344 EMAIL: als@alsurvey.net

RECORD PLAT  
PENTECOSTAL CHURCH OF GOD IN CHRIST